



Qualität von Anfang an.

Technische Daten

ANSCHLUSS

- Innengewinde, 1/8" - 4"
- Außengewinde, 1/8" - 4"

BETRIEBSDRUCK

Bis Nenndruck PN 10.

Bei Verschraubungen mit PTFE-Dichtring (Art. FG42xx, FG43xx, FG50xx, FG51xx und FG53xx) bis +80°C. Bei Betriebstemperaturen über +80°C siehe Druck-Temperatur-Diagramm.

WERKSTOFFE

Verschraubungen: Edelstahl 1.4408
Edelstahl 1.4571
Dichtung: PTFE (nur bei Art. FG42xx, FG43xx, FG50xx, FG51xx und FG53xx)

TEMPERATUR

-20°C ... +100°C

Alle Angaben sind freibleibend und unverbindlich!

Specification

CONNECTION

- B.S.P. female thread 1/8" - 4"
- B.S.P. male thread Außengewinde, 1/8" - 4"

PRESSURE RANGE

Up to nominal pressure PN 10

By unions with PTFE-sealing (only by Art. FG42xx, FG43xx, FG50xx, FG51xx and FG53xx) up to +80°C. For higher temperatures please refer to the Pressure-Temperature-Diagram.

MATERIAL

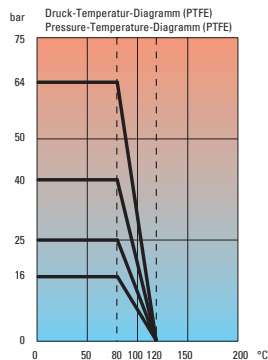
Pipe fittings: Stainless steel 1.4408
Stainless steel 1.4571
Seal: PTFE (only by Art. FG42xx, FG43xx, FG50xx, FG51xx and FG53xx)

TEMPERATURE

-20°C ... +100°C

The above information is intended for guidance only and the company reserves the right to change any data herein without prior notice!

Druck - Temperatur - Diagramm (PTFE)
Pressure - Temperature - diagram (PTFE)



Artikel:
FG

Edelstahlver-
schraubungen
PN 10

Edelstahl



Type:
FG

Stainless steel
Pipe fittings
PN 10

Stainless steel



Dok.-Nr.: KAT-FG-1/10 - 08.10.2024 - Änderung: Gewindeangaben überarbeitet

Artikel- u. Bestellangaben: z.B. FG122321

= Doppelnippel, reduziert, Edelstahl, Gewinde G 1/2 auf G 1/4

Ordering example: e.g. FG122321

= Hexagon nipple, reducing, Stainless steel, B.S.P. thread G 1/2 to G 1/4

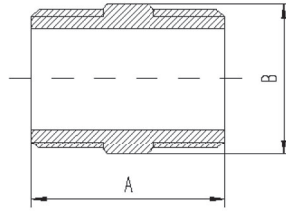
1.+ 4. Stelle Produkt	5. - 6. Stelle Anschlußgröße	7.+ 8. Stelle Anschlußgröße (Option)
FG11 bis FG53 = Edelstahlver- schraubungen	20 = 1/8"	26 = 1 1/4"
	21 = 1/4"	27 = 1 1/2"
	22 = 3/8"	28 = 2"
	23 = 1/2"	29 = 2 1/2"
	24 = 3/4"	30 = 3"
	25 = 1"	31 = 4"

1.+ 4. Digit Product	5. - 6. Digit Connection size	7.+ 8. Digit Connection size (Options)
FG11 up to FG53 = Stainless steel pipe fittings	20 = 1/8"	26 = 1 1/4"
	21 = 1/4"	27 = 1 1/2"
	22 = 3/8"	28 = 2"
	23 = 1/2"	29 = 2 1/2"
	24 = 3/4"	30 = 3"
	25 = 1"	31 = 4"

Art. FG - Seite 1/10



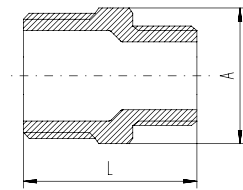
FG11xx Doppelnippel, konisch
Hexagon nipple



xx	R	A	B
20	1/8	28	13
21	1/4	30	14
22	3/8	35	17.5
23	1/2	38	22
24	3/4	43	27.5
25	1	48	34.5
26	1 1/4	54	43.5
27	1 1/2	56	49
28	2	64	61
29	2 1/2	72	77
30	3	78	91
31	4	86	116



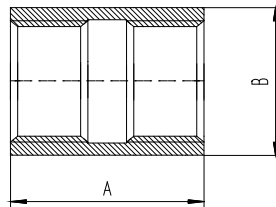
FG12xxxx Doppelnippel, reduziert, konisch
Hexagon nipple, reducing



xxxx	R	R	L	A
2120	1/4	1/8	29	14
2220	3/8	1/8	31	17.5
2221	3/8	1/4	32	17.5
2321	1/2	1/4	35	22
2322	1/2	3/8	36	22
2423	3/4	1/2	41	27.5
2523	1	1/2	45	34.5
2524	1	3/4	47	34.5
2625	1 1/4	1	52	43.5
2726	1 1/2	1 1/4	55	49
2827	2	1 1/2	61	61
2928	2 1/2	2	69	77
3029	3	2 1/2	75	91
3130	4	3	82	116



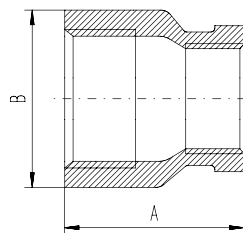
FG13xx Muffe, gegossen
Socket plain



xx	Rp	A	B
20	1/8	24	14.5
21	1/4	24	17.5
22	3/8	30	20
23	1/2	32	26
24	3/4	35	31.5
25	1	41.5	39
26	1 1/4	45	47.5
27	1 1/2	47	54
28	2	53	67
29	2 1/2	60	83
30	3	62	97
31	4	64	123



FG14xxxx Muffe, reduziert, gegossen
Socket banded, reducing

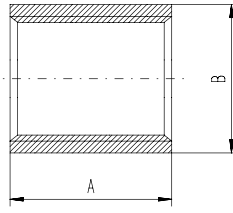


xxxx	Rp	Rp	A	B
2120	1/4	1/8	26	17,5
2221	3/8	1/4	30	20
2321	1/2	1/4	32	26
2322	1/2	3/8	34	26
2423	3/4	1/2	38	31,5
2523	1	1/2	41	39
2524	1	3/4	42	39
2625	1 1/4	1	45	47,5
2726	1 1/2	1 1/4	49	54
2827	2	1 1/2	50	67
2928	2 1/2	2	60	83
3029	3	2 1/2	69	97
3130	4	3	73	123





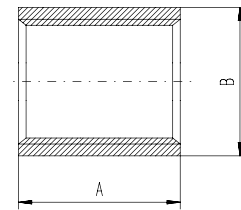
FG15xx Muffe, bearbeitet
Socket plain



xx	Rp	A	B
20	1/8	17	13,2
21	1/4	25	17,2
22	3/8	26	20,7
23	1/2	34	25,7
24	3/4	36	31,2
25	1	43	38,7
26	1 1/4	48	47,7
27	1 1/2	48	53,7
28	2	56	65,7
29	2 1/2	65	82,7
30	3	71	95,7
31	4	83	120,7



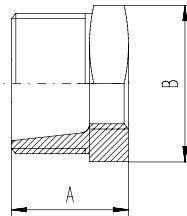
FG17xx Muffe, kurz, bearbeitet
Half socket plain



xx	Rp	A	B
20	1/8	11	13,2
21	1/4	15	17,2
22	3/8	16	20,7
23	1/2	20	25,7
24	3/4	21	31,2
25	1	25	38,7
26	1 1/4	28	47,7
27	1 1/2	28	53,7
28	2	31	65,7
29	2 1/2	36	82,7
30	3	39	95,7
31	4	45	120,7



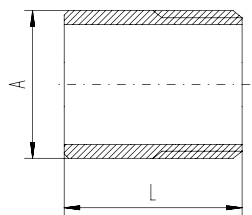
FG18xxxx Reduzierstück
Hexagon bushing



xxxx	R	Rp	A	B
2120	1/4	1/8	19	14
2221	3/8	1/4	21	17,5
2321	1/2	1/4	24	22
2322	1/2	3/8	24	22
2423	3/4	1/2	26	27,5
2523	1	1/2	27	34,5
2524	1	3/4	27	34,5
2625	1 1/4	1	30	43,5
2726	1 1/2	1 1/4	31	49
2827	2	1 1/2	35	61
2928	2 1/2	2	41	77
3029	3	2 1/2	44	91
3130	4	3	48	116



FG19xxxx Anschweißnippel
Welding nipple



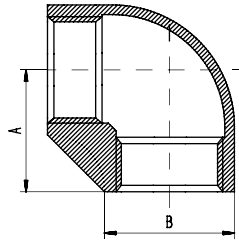
xxxx	R	A	L
3020	1/8	10,3	30,0
3021	1/4	13,7	30,0
3022	3/8	17,1	30,0
3523	1/2	21,3	35,0
4024	3/4	26,7	40,0
4025	1	33,4	40,0
5026	1 1/4	42,2	50,0
5027	1 1/2	48,3	50,0
5028	2	60,3	50,0
5029	2 1/2	76,3	60,0
7030	3	88,9	70,0
8031	4	114,0	80,0





FG20xx

Winkel 90°, innen/innen
Elbow 90°, female/female

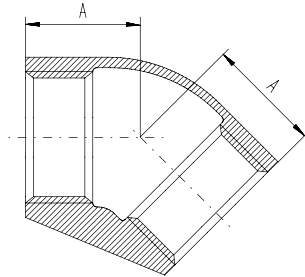


xx	Rp	A	B
20	1/8	17	14,5
21	1/4	19	17,5
22	3/8	23	20
23	1/2	27	26
24	3/4	31,5	31,5
25	1	36,5	39
26	1 1/4	42,5	47,5
27	1 1/2	47,5	54
28	2	56	67
29	2 1/2	68	83
30	3	77,5	97
31	4	93	123



FG21xx

Winkel 45°, innen/innen
Elbow 45°, female/female

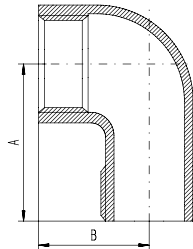


xx	Rp	A
20	1/8	17
21	1/4	17
22	3/8	19
23	1/2	21
24	3/4	25
25	1	29
26	1 1/4	33
27	1 1/2	37
28	2	42
29	2 1/2	50
30	3	54
31	4	65



FG23xx

Winkel 90°, innen/außen
Elbow 90°, female/male

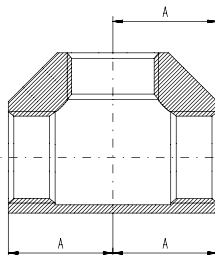


xx	Rp	A	B
20	1/8	24	17
21	1/4	28	20
22	3/8	32	23
23	1/2	37	28
24	3/4	43	32
25	1	52	38
26	1 1/4	57	43
27	1 1/2	62	48
28	2	74	57
29	2 1/2	85	68
30	3	98	78
31	4	118	97



FG24xx

T-Stück
Tee banded

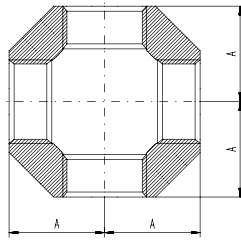


xx	Rp	A
20	1/8	17
21	1/4	19
22	3/8	23
23	1/2	27
24	3/4	31,5
25	1	36,5
26	1 1/4	42,5
27	1 1/2	47,5
28	2	56
29	2 1/2	68
30	3	77,5
31	4	93





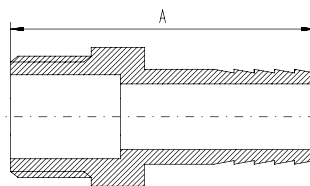
FG26xx Kreuzstück
Cross



xx	Rp	A
20	1/8	17
21	1/4	19
22	3/8	23
23	1/2	27
24	3/4	31,5
25	1	36,5
26	1 1/4	42,5
27	1 1/2	47,5
28	2	56
29	2 1/2	68
30	3	77,5
31	4	93



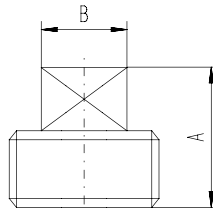
FG30xxxx Schlauchtülle
Hose nipple



xxxx	R	A	Ø [mm]
2108	1/4	41	8
2210	3/8	46	10
2313	1/2	56	13
2420	3/4	64	20
2526	1	71	26
2633	1 1/4	80	33
2739	1 1/2	80	39
2852	2	97	52



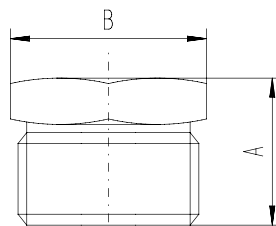
FG31xx Stopfen, Vierkant
Square plug



xx	R	A	B
20	1/8	13,5	7
21	1/4	17	8
22	3/8	18	10
23	1/2	22	11
24	3/4	23,5	17
25	1	27	19
26	1 1/4	29	22
27	1 1/2	30	22
28	2	36	27
29	2 1/2	39	32
30	3	44	36
31	4	58	41



FG32xx Stopfen, Sechskant
Hexagon plug

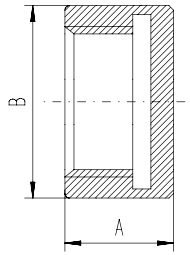


xx	R	A	B
20	1/8	16	13
21	1/4	18	14
22	3/8	19	17,5
23	1/2	22	22
24	3/4	25	27,5
25	1	27	34,5
26	1 1/4	30	43,5
27	1 1/2	31	49
28	2	35	61
29	2 1/2	39	77
30	3	43	91





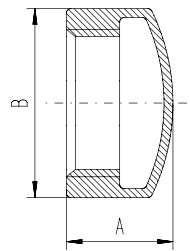
FG33xx Kappe, Sechskant
Hexagon plugs



xx	Rp	A	B
20	1/8	15	12,8
21	1/4	15	15,5
22	3/8	16	18,2
23	1/2	20	24,3
24	3/4	22	29,3
25	1	26	36,8
26	1 1/4	28	45,5
27	1 1/2	32	51
28	2	34	64
29	2 1/2	39	79,6
30	3	42	93,4
31	4	44	119,5



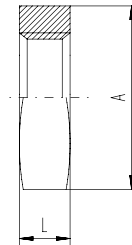
FG34xx Kappe, rund
Round cap banded



xx	Rp	A	B
20	1/8	15	14,5
21	1/4	15	17,5
22	3/8	16	20
23	1/2	20	26
24	3/4	22	31,5
25	1	26	39
26	1 1/4	28	47,5
27	1 1/2	32	54
28	2	34	67
29	2 1/2	39	83
30	3	42	97
31	4	44	123



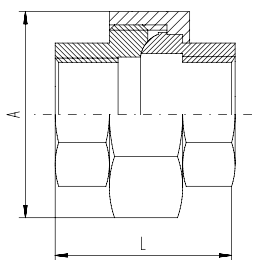
FG35xx Sechskantmutter
Hexagon nut



xx	Rp	A	L
20	1/8	19	6
21	1/4	22	7
22	3/8	27	8
23	1/2	32	10
24	3/4	36	10
25	1	46	10
26	1 1/4	55	11
27	1 1/2	60	12
28	2	75	13
29	2 1/2	95	16
30	3	105	19
31	4	135	22



FG40xx Kupplungsstück, konisch dichtend
Unions conical joint

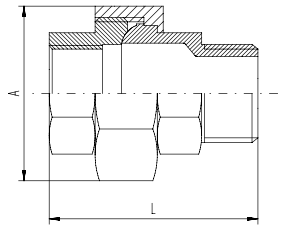


xx	Rp	A	L
20	1/8	27,5	27,5
21	1/4	32,5	31
22	3/8	36	32
23	1/2	39	37,2
24	3/4	47	40,5
25	1	55	46
26	1 1/4	67	52
27	1 1/2	72,5	52
28	2	90	65
29	2 1/2	110	72
30	3	123	78,2
31	4	149	89





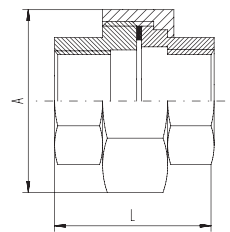
FG41xx Kupplungsstück, konisch dichtend
Unions conical joint



xx	R/Rp	A	L
20	1/8	27	35
21	1/4	32,5	42
22	3/8	36	44,5
23	1/2	39	51
24	3/4	47	57,5
25	1	55	65
26	1 1/4	67	70,5
27	1 1/2	72,5	74,5
28	2	90	87,5
29	2 1/2	110	93
30	3	123	108
31	4	152	129



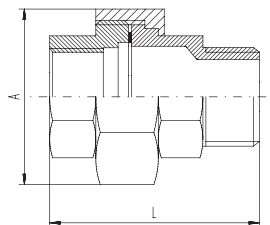
FG42xx Kupplungsstück, flach dichtend
mit PTFE-Dichtung
Unions flat seat with
PTFE-gasket



xx	Rp	A	L
20	1/8	27,5	27,5
21	1/4	32,5	31
22	3/8	36	32
23	1/2	39	37,5
24	3/4	47	40,5
25	1	55	46
26	1 1/4	67	52
27	1 1/2	72,5	52
28	2	90	65
29	2 1/2	110	72
30	3	123	78,2
31	4	149	89



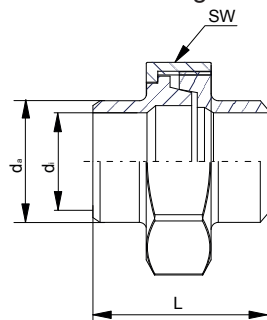
FG43xx Kupplungsstück, flach dichtend
mit PTFE-Dichtung
Unions flat seat with
PTFE-gasket



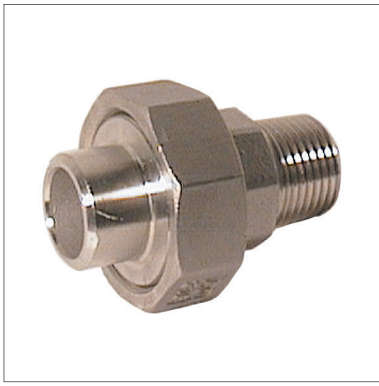
xx	R/Rp	A	L
20	1/8	27	35
21	1/4	32,5	42
22	3/8	36	44,5
23	1/2	39	51
24	3/4	47	57,5
25	1	55	65
26	1 1/4	67	70,5
27	1 1/2	72,5	74,5
28	2	90	87,5
29	2 1/2	110	93
30	3	123	108
31	4	152	129



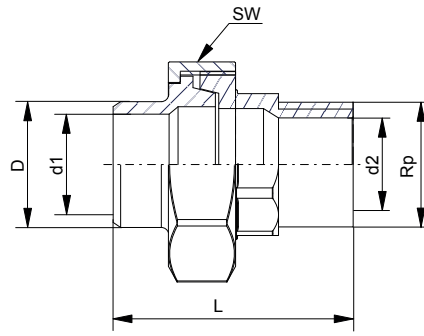
FG48xx Anschweißverschraubung,
konisch dichtend.
welded union,
conical sealing



xx	da	di	L	SW
20	10	6	28	27
21	13,5	8,8	32	32,5
22	17,2	12,5	37,7	36
23	21,3	16	40,8	39
24	26,9	21	47,5	47
25	33,7	27	49	55
26	42,4	35	54	63
27	48,3	41	56	72,5
28	60,3	52	63,5	90
29	76,1	68,7	69	110
30	88,9	80,8	75	123
31	114,0	105	83,5	149



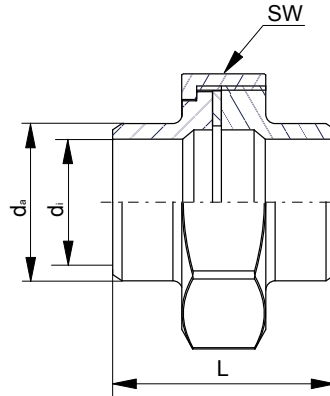
FG49xx Anschweiß-Gewinde-Verschraubung, konisch dichtend/
Welded-Threaded Union, conical sealing



xx	R	D	d1	d2	L	SW
20	1/8	10	6	6	40	27
21	1/4	13,5	8,8	8	43	32,5
22	3/8	17,2	12,5	12,5	45	36
23	1/2	21,5	16	15	52	39
24	3/4	26,9	21	20	59	47
25	1	33,7	27	25	65,5	55
26	1 1/4	42,4	35	32	70	67
27	1 1/2	48,3	41	38	75,6	72,5
28	2	60,3	52	50	88	90
29	auf Anfrage / on request					
30	auf Anfrage / on request					
31	-	-	-	-	-	-



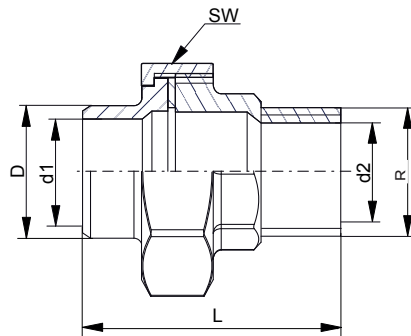
FG50xx Anschweißverschraubung, flachdichtend (PTFE) /
Welded Union, flat sealing (PTFE)



xx	da	di	L	SW
20	10	6	28	27
21	13,5	8,8	32	32,5
22	17,2	12,5	37,7	36
23	21,3	16	40,8	39
24	26,9	21	47,5	47
25	33,7	27	49	55
26	42,4	35	54	67
27	48,3	41	56	72,5
28	60,3	52	63,5	90
29	76,1	68,7	69	110
30	88,9	80,8	75	123
31	114	105	83,5	149

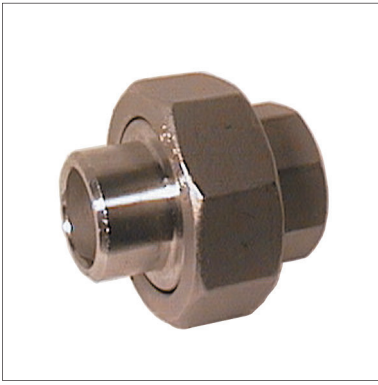


FG51xx Anschweiß-Gewinde-Verschraubung, flachdichtend(PTFE) /
Welded-Threaded Union, flat sealing(PTFE)

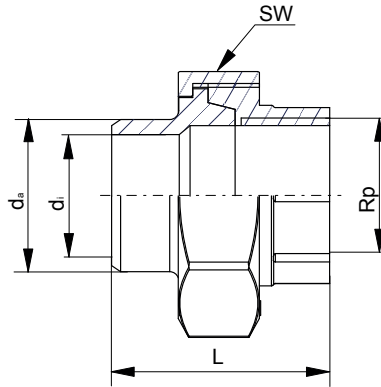


xx	R	D	d1	d2	L	SW
20	1/8	10	6	6	40	27
21	1/4	13,5	8,8	8	43	32,52
22	3/8	17,2	12,5	10	45	36
23	1/2	21,3	16	15	52	39
24	3/4	26,9	21	20	59	47
25	1	33,7	27	25	65,5	55
26	1 1/4	42,4	35	32	70	67
27	1 1/2	48,3	41	38	75,6	72,5
28	2	60,3	52	50	88	90
29	auf Anfrage / on request					
30	auf Anfrage / on request					
31	-	-	-	-	-	-

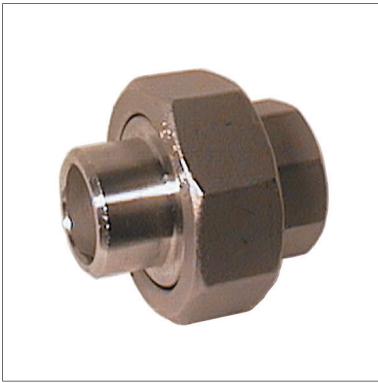




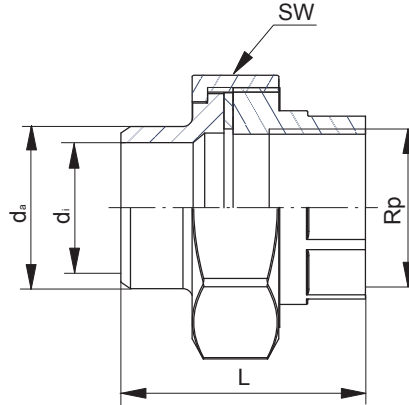
FG52xx Anschweiß-Gewindeverschraubung, konisch dichtend /
Welded-Threaded Union, conical sealing



xx	G	da	di	L	SW
20	-	-	-	-	-
21	-	-	-	-	-
22	-	-	-	-	-
23	½	21,3	16	35,7	39
24	¾	26,9	21	42	47
25	1	33,7	27	47,5	55
26	1¼	42,4	35	52	67
27	1½	48,3	41	52,5	72,5
28	2	60,3	52	63,2	90
29	auf Anfrage / on request				
30	auf Anfrage / on request				
31	-	-	-	-	-



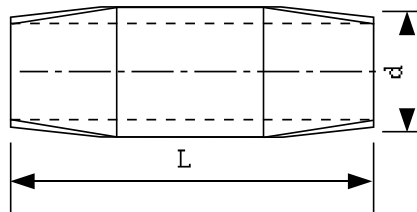
FG53xx Anschweiß-Gewindeverschraubung, flach dichtend (PTFE) /
Welded-Threaded Union, flat sealing (PTFE)



xx	G	da	di	L	SW
20	-	-	-	-	-
21	-	-	-	-	-
22	-	-	-	-	-
23	½	21,3	16	35,7	39
24	¾	26,9	21	42	47
25	1	33,7	27	47,5	55
26	1¼	42,4	35	52	67
27	1½	48,3	41	52,5	72,5
28	2	60,3	52	63,2	90
29	auf Anfrage / on request				
30	auf Anfrage / on request				
31	-	-	-	-	-



FG61xx Rohrdoppelnippel /
Barrel nipple



xx	G	d	L	NW
4020	1/8	10,2	40	6
4021	1/4	13,5	40	8
4022	3/8	17,2	40	10
6023	1/2	21,3	60	15
6024	3/4	26,9	60	20
6025	1	33,7	60	25
8026	1¼	42,4	80	32
8027	1½	48,3	80	40
1028	2	60,3	100	50
1029	2½	76,1	100	65





FG9726

Winkelverschraubung 1 1/4" (DIN2999) innen/ außen
Edelstahl 1.4401 (flachdichtend mit PTFE-Ring) /
Elbow screw connection 1 1/4 "(DIN2999) female/ male
Stainless steel 1.4401 (flat sealing with PTFE ring)

Betriebsdruck/ working pressure
-10bar

Mediumtemperatur/ Mediatemperatur
-30°C ... +160°C

UMGEBUNGSTEMPERATUR/ AMBIENT TEMPERATURE
0°C ... +80°C

